

---

# Post-Disaster Community Recovery

## Illinois Association of Regional Councils

FEMA Region V

June 29, 2017

COORDINATING AGENCIES



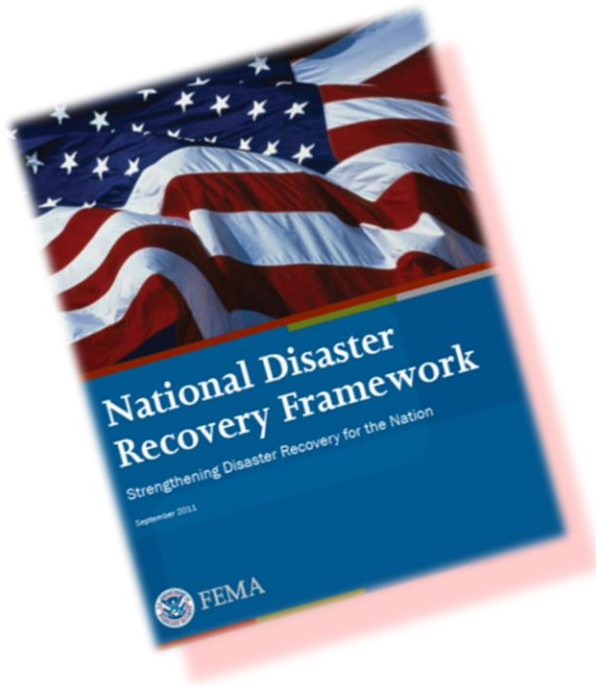
FEMA



# The National Disaster Recovery Framework

---

- Goes beyond restoration to pre-disaster conditions.



***Focus on revitalization of:  
Health, social, physical,  
economic, natural and  
environmental fabric of the  
community.***

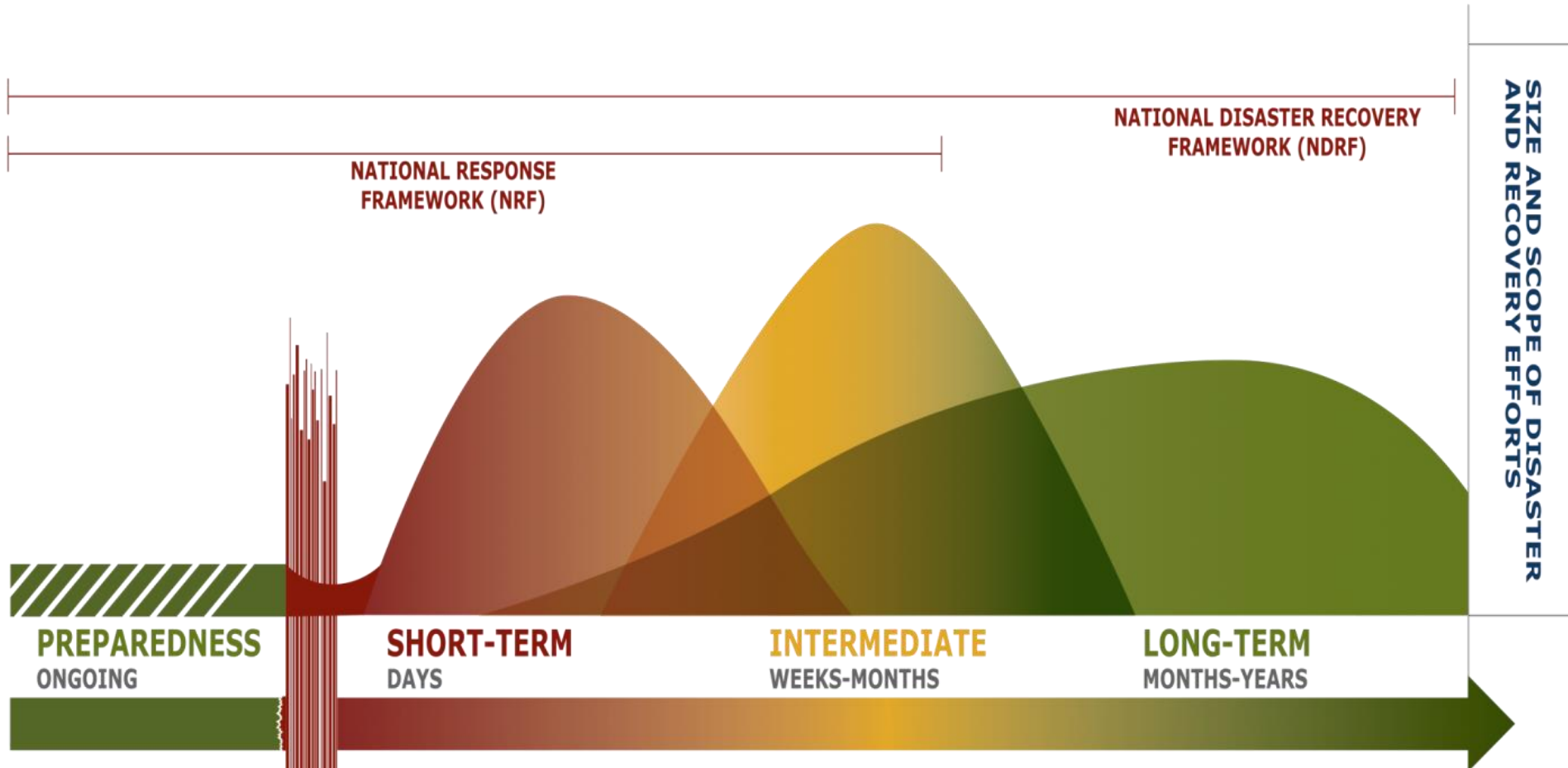
## COORDINATING AGENCIES



**FEMA**



# What is the Scope of the NDRF?



COORDINATING AGENCIES



**FEMA**



**US Army Corps of Engineers**



# National Disaster Recovery Framework

---

- Defines Leadership Recovery **roles and responsibilities**.
- Establishes a **coordination platform** to effectively manage recovery.
- Promotes **Whole Community participation** and;
- **Strategic planning**.



Who are the Leaders?

COORDINATING AGENCIES



FEMA



# Recovery Support Function Core Capabilities



**Community Planning  
& Capacity Building**

**Housing Recovery**



**US Army Corps  
of Engineers**

**Infrastructure Systems**

**Natural and Cultural  
Resources**



**Economic Recovery**

**Health and Social  
Services**



COORDINATING AGENCIES



**FEMA**



**US Army Corps  
of Engineers**





# Key Concept: Recovery Support Functions

---

- Support and problem solving
- Improved access to resources
- Foster coordination among stakeholders.

*This includes: state, tribal, territorial, AND, regional, local, nongovernmental partners.*

COORDINATING AGENCIES

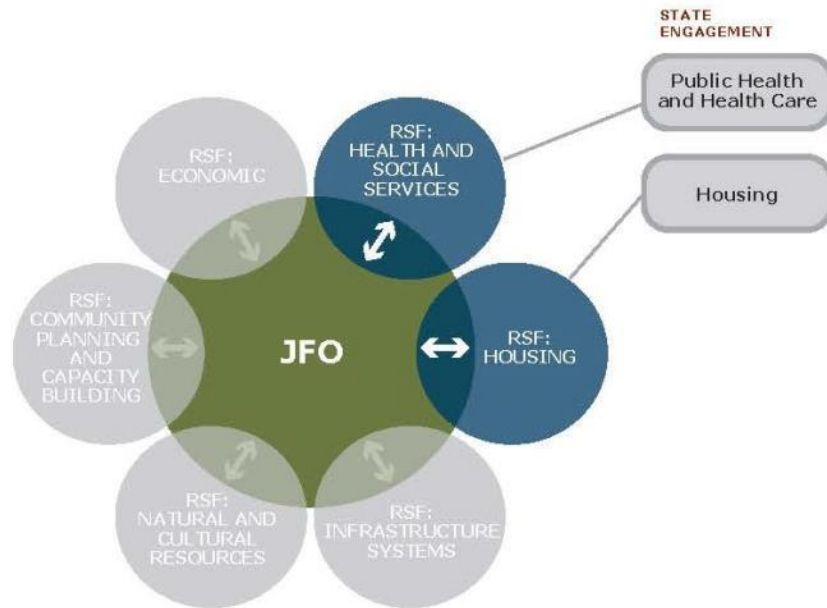


FEMA

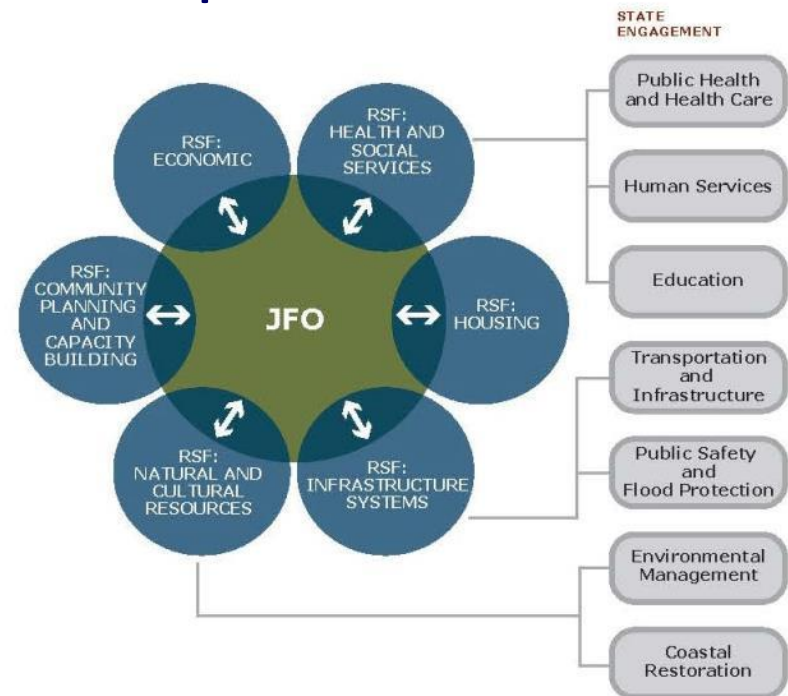


# Scaling RSF Engagement Based on Disaster Impacts

## Disaster with Moderate Impact on Two Sectors



## Disaster with Catastrophic Impact on Multiple Sectors



COORDINATING AGENCIES



FEMA



# NDRF Progression

## AET Process:

Decision – have core capabilities for recovery been exceeded

7-10 days to complete

## MSA Process:

Defines the recovery coordination mission – What are the Issues, Needs, Gaps?

30 days to complete

## RSS Process:

Outlines the support strategies  
How will issues, needs, and gaps get filled?

60-90 days to complete

## RSS

### Implementation:

Relates to the execution of the recovery support strategies and the delivery of recovery support actions.

1 to 12+ months to execute.

COORDINATING AGENCIES



FEMA





# Brookport, IL – Housing and Public Facilities



COORDINATING AGENCIES



FEMA



US Army Corps  
of Engineers



# Oakville, IA - Housing Recovery



COORDINATING AGENCIES

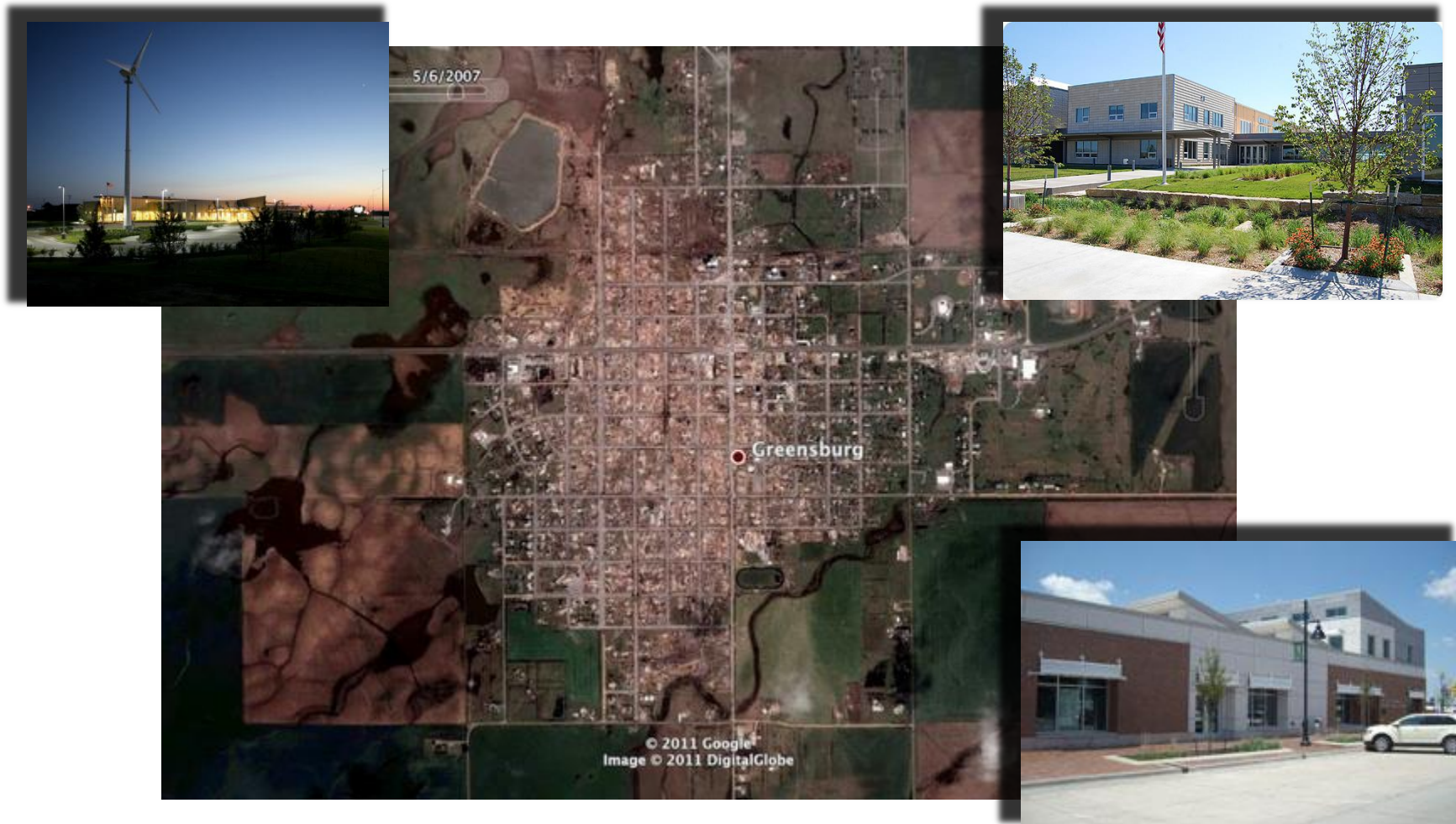


FEMA





# Kiowa County, KS – Multi-Sector Impacts



COORDINATING AGENCIES



FEMA



# Post-Disaster Recovery Timeline

- 1 Identify Strategic Objectives.
- 2 Outline Recovery Support Activities
- 3 Identify Implementation Milestones
- 4 Communicate progress



## COORDINATING AGENCIES



FEMA



# Regional Agency Role

---

- ALL disasters have impact on the community
- Not all disasters receive federal declaration

**Regional agencies can work with local leaders:**



*“It is only a disaster if you don’t have a plan.”*

COORDINATING AGENCIES



**FEMA**





# Regional Agency Role

---

- Develop relationships
- Build on and integrate with community plans.
- Promote disaster recovery at the local level.
- Promote an inclusive process.
- Focus on mitigation, resilience, and sustainability.



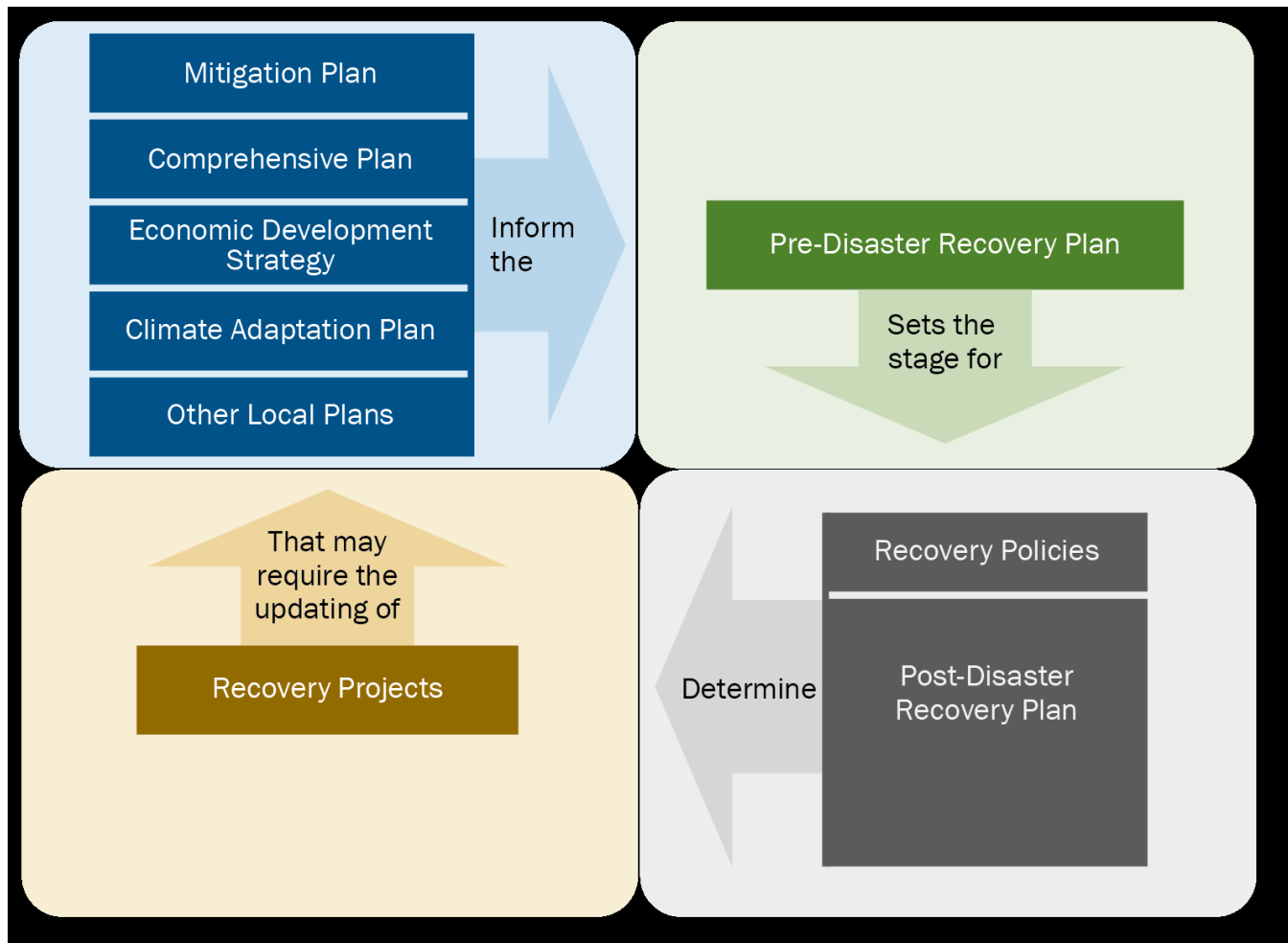
## COORDINATING AGENCIES



FEMA



# Regional Agency Role









COORDINATING AGENCIES



FEMA



# Regional Agency Role

SCALE Can be discontinuous, involving multiple locations at each geographic scale	TYPE A: RESTORATION  Characterized by limited life losses and population-economic dislocation, repairable damage, and minimal land-use changes	TYPE B: REDEVELOPMENT  Characterized by major life or structure losses and population- economic dislocation; demolition, reconstruction, and land-use changes; mitigation opportunities
Neighborhoods	 <p><b>LEVEL 1:</b> Neighborhood Restoration</p> <p><b>Example:</b> Yountville, California, mobile home park flood wall and restoration</p>	 <p><b>LEVEL 2:</b> Neighborhood Redevelopment</p> <p><b>Example:</b> September 11, 2001, World Trade Center attack</p>
Communities	 <p><b>LEVEL 3:</b> Community Restoration</p> <p><b>Example:</b> Oakland Hills, California, firestorm</p>	 <p><b>LEVEL 4:</b> Community Redevelopment</p> <p><b>Example:</b> Greensburg, Kansas tornado</p>
Regions	 <p><b>LEVEL 5:</b> Regional Restoration</p> <p><b>Example:</b> Northridge Earthquake</p>	 <p><b>LEVEL 6:</b> Regional Redevelopment</p> <p><b>Example:</b> Tohoku Earthquake and tsunami</p>

## COORDINATING AGENCIES



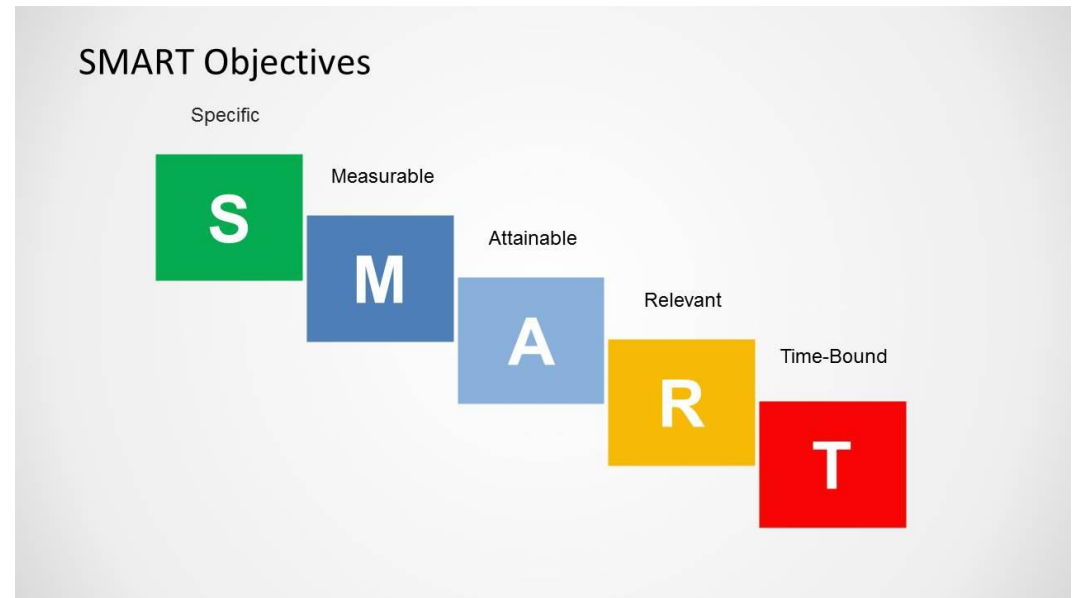
**FEMA**



# Regional Agency Role

---

- Focus on Goals & Objectives
- SMART
- Ownership = Key
- Resources = Success



## COORDINATING AGENCIES



FEMA



US Army Corps  
of Engineers



# Contact Information

---

- **Earl W. Zuelke Jr.**

Federal Disaster Recovery Coordinator

Lead Field Coordinator

FEMA Region-V

312-408-5372 (office)

312-659-8421 (mobile)

[Earl.Zuelke@fema.dhs.gov](mailto:Earl.Zuelke@fema.dhs.gov)

- **John F. Boyle**

Federal Disaster Recovery Coordinator

FEMA Region-V

312-408-5305

202-705-0578

[John.boyle@fema.dhs.gov](mailto:John.boyle@fema.dhs.gov)

COORDINATING AGENCIES



**FEMA**



**US Army Corps  
of Engineers**

